

VITRO
Frameless Glass



*Whether you're a home owner, trade customer or delivering a large commercial project,
we take the greatest care when measuring, designing and fitting your new installation*

MASTERSTAIRS
COUNTRYWIDE

CATALOGUE



VITRO FRAMELESS GLASS BALUSTRADES

Recessed	Pg. 2
Side Mount	Pg. 3
Upright/Spigot	Pg. 4
Curved	Pg. 5
Swimming Pool	Pg. 6

SHOWERS

Showers	Pg. 7
---------	-------

STACKINGS

Turn & Slide	Pg. 8
Multi Sliding System	Pg. 9

FRONT FACADE & GLASS CURTAIN

Pg. 10

WINE/WHISKEY CELLARS

Pg. 11

OTHER SERVICES

Pg. 12

ABOUT US, PRODUCT INFO & SAGGA CERTIFICATE

Pg. 13

MASTER STAIRS STAIRCASES

Pg. 14

Spiral Open tread staircase	Pg. 15
Open tread staircase	Pg. 16
Conventional Spiral staircase	Pg. 17
Open tread/ Cantilever staircase	Pg. 18
Cantilever staircase	Pg. 19
Curved staircase	Pg. 20
Steel and wood staircase	Pg. 21
Profiled staircase	Pg. 22
Conventional staircase	Pg. 23
Steel spiral staircase	Pg. 24

STEEL SCREENS

Pg. 25

PERGOLA

Pg. 26

STEEL ART

Pg. 27

STEEL GATES

Pg. 28

ABOUT US, PRODUCT INFO & ECSA CERTIFICATE

Pg. 29







RECESSED BALUSTRADES

The Frameless Recessed Glass Balustrade (12mm in thickness) is slotted into the concrete substrate grinded or slotted at a depth of 100mm. Glass is secured with a chemical liquid grout specifically formulated for this process, creating the ultimate in aesthetics. With no need for brackets or posts, Recessed Balustrades are ideal for making the most of a view out of your home.





SIDE MOUNT BALUSTRADES

The Side Mount Frameless Balustrade is mounted to the side of a substrate or stair-landing for a sophisticated glass and stainless-steel finish. Aesthetically, Side Mount Balustrades are stunning and provides the ultimate balustrade design. Installation and due care are required to mark-out and to get the panels into position.

Providing an elegant and structurally sound barrier that retains the view or sense of space that other types of barriers simply cannot achieve. We use 12mm Toughened Safety Glass panels and 304 grade solid stainless-steel studs to produce a near seamless finish. Side mounted balustrades are ideal for that extra bit of style and functionality without compromising on safety and security.

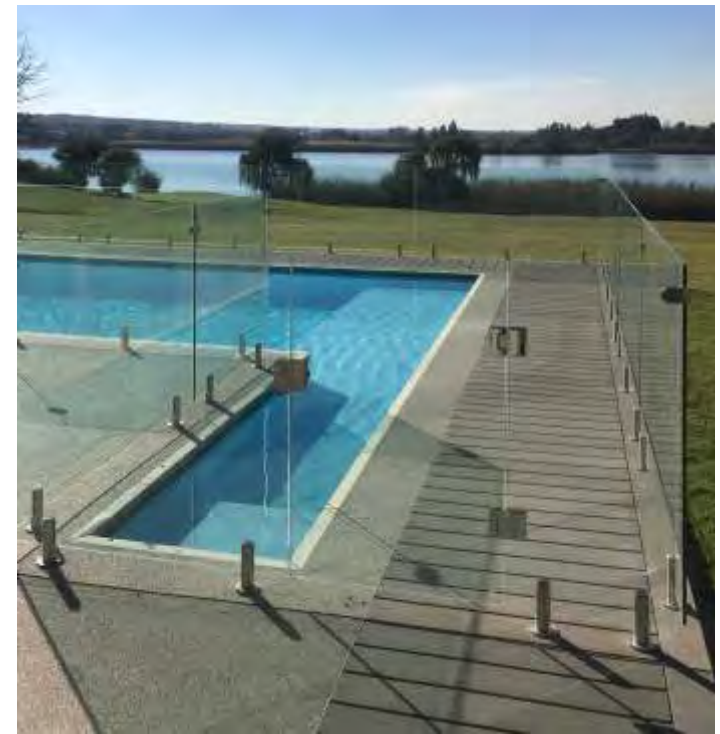






UPRIGHT/SPIGOT BALUSTRADES

Glass Upright / Spigot Balustrades are once again a highly versatile style of balustrade. It can be used both internally and externally and in commercial or residential settings. The Upright / Spigot Balustrade will let you enjoy the view fully with non-invasive clamps holding the glass in place. Manufactured from 304 Solid Stainless Steel. Whether you're using it to cordon off a swimming pool, surround a balcony or up a staircase, Upright / Spigot Balustrades is sure to suit your needs.







CURVED BALUSTRADES

Stylish Balustrades with glass curves look stunning around your staircase as well as commercial properties: on balconies, terraces, upper floor landings, mezzanines, walk-ways – internal or external. Made from 12mm toughened safety glass, application can be done as recessed, side-mounted or Upright / Spigot systems



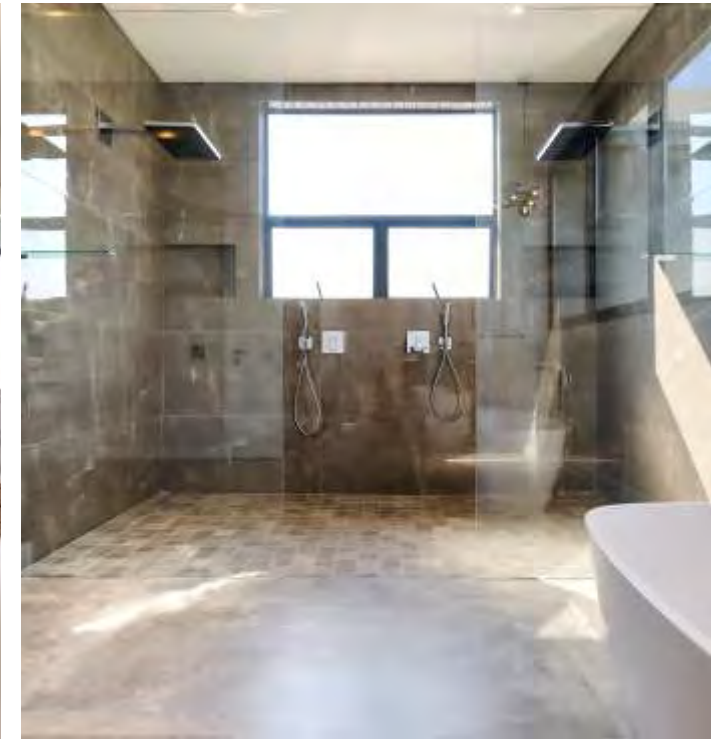


SWIMMINGPOOL BALUSTRADES

Unattended swimming pools represent a serious danger to the lives of children and pets so it has now become a popular feature to enclose these areas with Frameless Glass Balustrades and can be done as Recessed, Side Mounted or Upright / Spigot systems. Note that a minimum height from floor level must be at least 1200mm high. Matching glass gates can also be included to provide easy access which can be locked with a SABS approved magnetic gate lock and self closing hinges to keep children and pets out when required.



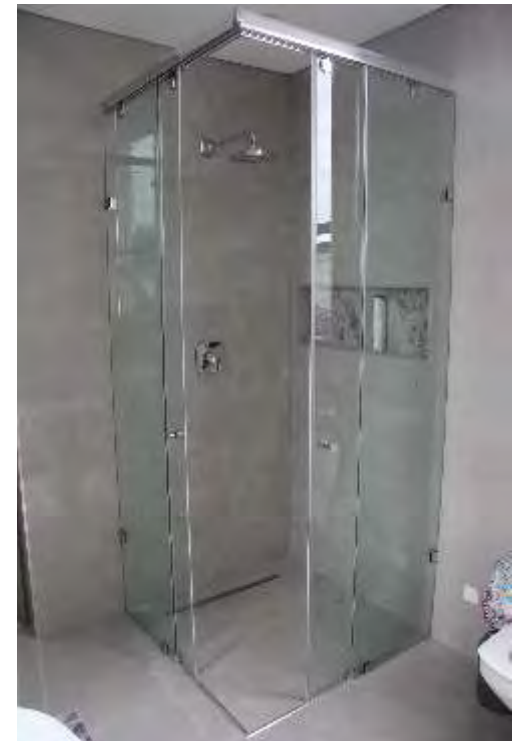




SHOWERS

The go-to option for those wanting to adopt a minimalist look, Frameless Shower enclosures can open a space while elevating its overall style. Rising sharply in popularity over the past few years, frameless shower cubicles and frameless shower screens boast an almost seamless look that allows for more light – making them great for darker spaces where natural light is scarce. Our frameless shower enclosure range includes various designs including stylish matt black finishes as well as hinged, sliding and pivot options to allow for easy access in almost any size of space.

Concerned about quality? Every Frameless Shower enclosure is manufactured of toughened safety glass to ensure years of faultless use.







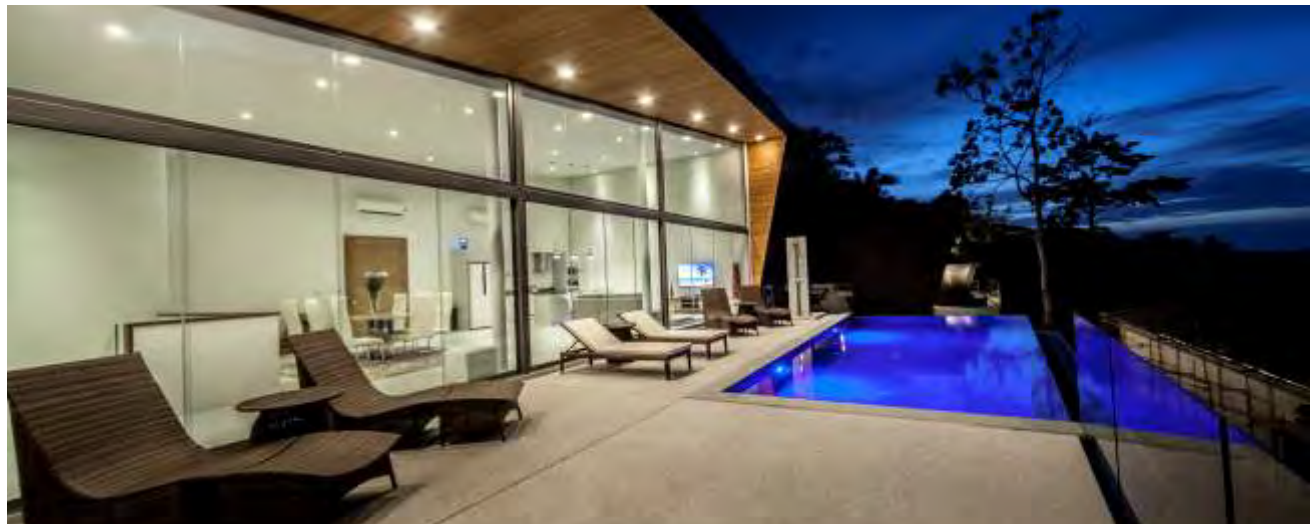
TURN & SLIDE STACKINGS

The Turn and Slide system is ideal for patio or balcony enclosures where protection from the elements is needed without compromising your view. Designed and tested to withstand very high winds and rain, the system may also be used as a primary door to create open plan living areas and a connection between the interior and outdoors. Individual, unconnected sliding panels allow homeowners to easily vary the configuration to effectively control airflow. The slimline profile of the turn and slide stacks away neatly without taking up unnecessary space. Systems are fully customizable, able to stack inward or outward, to slide around curves and corners and come with a number of floor track and handle options.



MULTI SLIDING SYSTEM

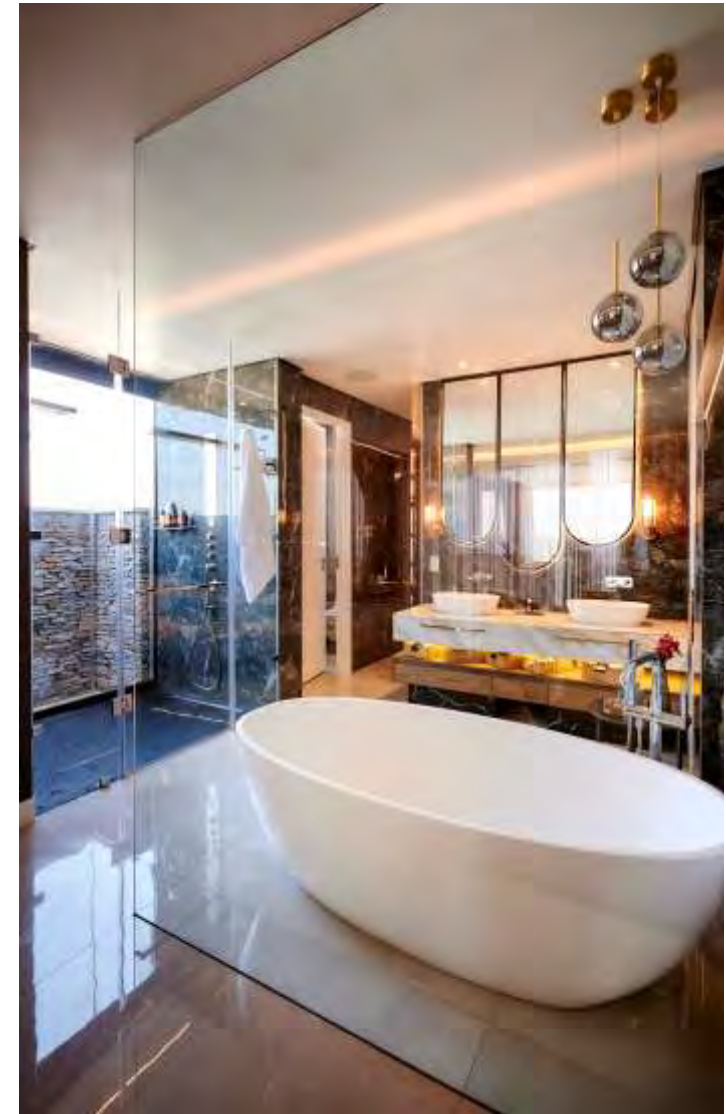
The multi sliding system has many applications. Use it as a patio or balcony enclosure system where protection from the elements is needed without compromising your view, or customize it as a modern office partition, room divider or door solution for open plan seamless living. With slimline profiles and a floor mounted construction, the Multi Sliding system can be retrofitted easily without overhead structural support. Panels are joined together through integrated followers and this combined with double low-wearing ball-bearing carriages allows for large areas to be opened or closed off with ease





FRONT FACADES & GLASS CURTAINS

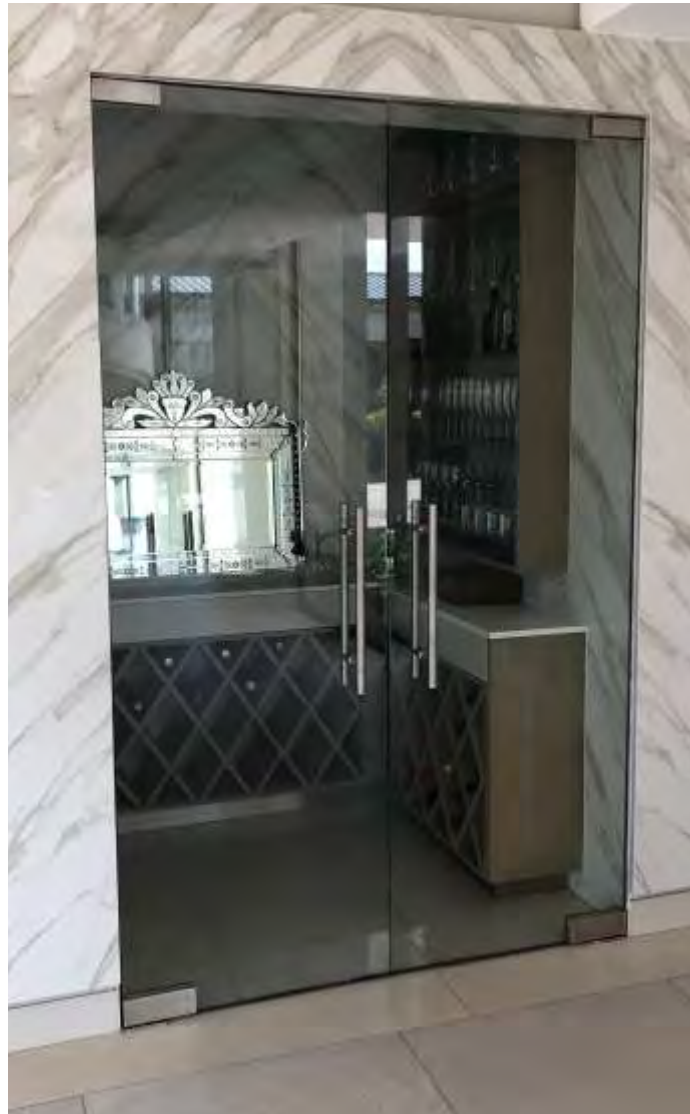
Frameless Front Facades / Glass Curtains bring light and space into any room and allows you to borrow and move light around giving an increased feeling of well-being to your home or working environment. With no bulky frames and clamps to spoil the open feel of your main home entrance or any other room, you can create open plan multi-use living and working areas.





WINE/WHISKEY CELLARS

Frameless Glass Cellar (Wine/Whiskey/Champaine) is a beautiful addition to any home for a number of reasons. First, the illusion of glass makes the cellar appear as if it is taking up minimal space. In addition, a glass wine cellar can be incorporated into an unused area of the home such as the main home staircase or an unused closet, under the stairs, or a corner of your living or dining room. A cooling unit can be added to your glass cellar, allowing you to store your wine long term under the proper conditions.







OTHER SERVICES

Challenge Vitro Frameless to design unique and original Frameless Glass ideas. Whether it be a custom Whiskey display case, a Frameless Glass Swimming Pool wall, Walk-on-Glass above your kitchen, Table Tops to fit any table design – we will be more than willing to assist, design and manufacture your Frameless impressions.







About Us

At Vitro Frameless, we design, manufacture and install Frameless Glass solutions for every interior and exterior space, and some surprisingly new and creative ideas requested from our clients, interior decorators and architects. The list is long: from frameless balustrades on balconies and staircases, frameless shower doors and bath enclosures, wine – whiskey and champagne cellars, conference rooms, stacking patio doors, kitchen splash-backs and countertops, tabletops,... to walls, partitions, swimming pool fencing and bars. So come on in, browse around and discover the myriad of ways structural Frameless Glass can enhance your home or business. With a combined 45 years' experience in the manufacturing and installation of all Frameless Glass products, all of us at Vitro Frameless look forward to making your ideas in glass a reality!

Product Info

TOUGHENED SAFETY GLASS

Also known as tempered glass, toughened safety glass is created using the thermal tempering process. Toughened safety glass can withstand high temperatures, making it ideal for showers, balustrades, stacking. Highly resistant to breakages when used for bathrooms, patios, doors and shop fronts, toughened safety glass helps to improve safety and security of a property. It is worth noting that this type of glass cannot be re-cut after it has been toughened; it must be cut prior to the toughening process.

LAMINATED GLASS

Made from two or more layers of glass separated by a bonded interlayer of plastic PVB. Any type of glass can be laminated, from painted to printed. Transparency of the glass isn't altered. Strong and durable, it is harder to break than ordinary glass. Grade A safety Glass that does not shatter and disperse when broken.

FLOAT GLASS

As the most basic glass there is, float glass is a starting material used when processing to create toughened, laminated glass and it is available in a variety of sizes and thicknesses and issued in the glass cutting process so it can be cut to the exact size required for the application.

Sizes of glass:

4mm / 6mm / 8mm / 10mm / 12mm

TINTED GLASS

Colour is added to the glass composition to create a tint. It is made by altering the chemical formulation of the glass. Its colour and density changes with the thickness of the glass. UV Protection - it reduces glare and the amount of solar energy transmitted through the glass. Aesthetics - the colour is durable and does not change over time. Most popular colours are bronze and grey tinted glass.

MIRROR GLASS

Mirror glass is created by giving a float glass panel a metal coating on one side. This created the mirror effect. Silver, Bronze and Grey mirrors are a popular choice for both domestic and commercial use. A beveled edge can also be added to edges of the mirror glass.

FROSTED ACID ETCHED GLASS

Frosted glass blurs images or prevents the glass from being clearly seen through. Used in both domestic and commercial settings. Offers privacy while also letting light in and also used as a form of decoration. Increases security through its obscured view.

PATTERNED GLASS

Patterned glass is typically produced by passing heated glass through rollers containing a regular pattern to be imprinted upon the glass. This type of glass is often used for bathroom windows or doors, where like frosted glass, light may be required but not total transparency.



SAGGA

SAGGA accredited glaziers/contractors are your best protection for ensuring that you, or your client's, buildings are glazed according to the Application of the National Building Regulations and an excellent way to protect you or your clients, from large damages claims associated with inadequate glazing. The South African Glass and Glazing Association (SAGGA) have accredited installers. These installers are skilled tradespeople who have agreed to a set code and who have qualified to apply a SAGGA certificate to any glazing undertaken.

WELCOME TO



MASTER STAIRS
COUNTRYWIDE





SPIRAL OPEN TREAD STAIRCASE

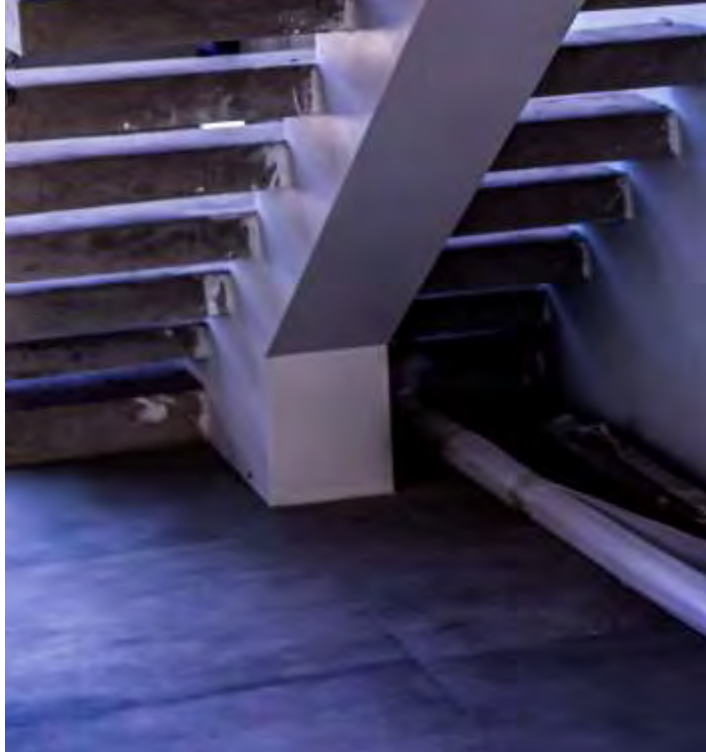
We create stunning Spiral open tread staircases to fit your personal taste and space. With the Spiral open tread you can create that illusion of open space and have the design adapted to it's surroundings by bending to fit the space. It truly is a staircase only few get to experience.





OPEN TREAD STAIRCASE

An open tread floating staircase features individual steps that appear to float in mid-air, creating a sleek and modern look. The absence of risers and the transparency of the design allows light to pass through, adding an airy and contemporary touch to any space.







CONVENTIONAL SPIRAL STAIRCASE

A Conventional spiral staircase is a vertical structure that twists and curves upward in a continuous helical pattern. It offers a compact and elegant solution for navigating between floors, adding architectural interest and efficient space utilization to any building. It's a one of a kind staircase.





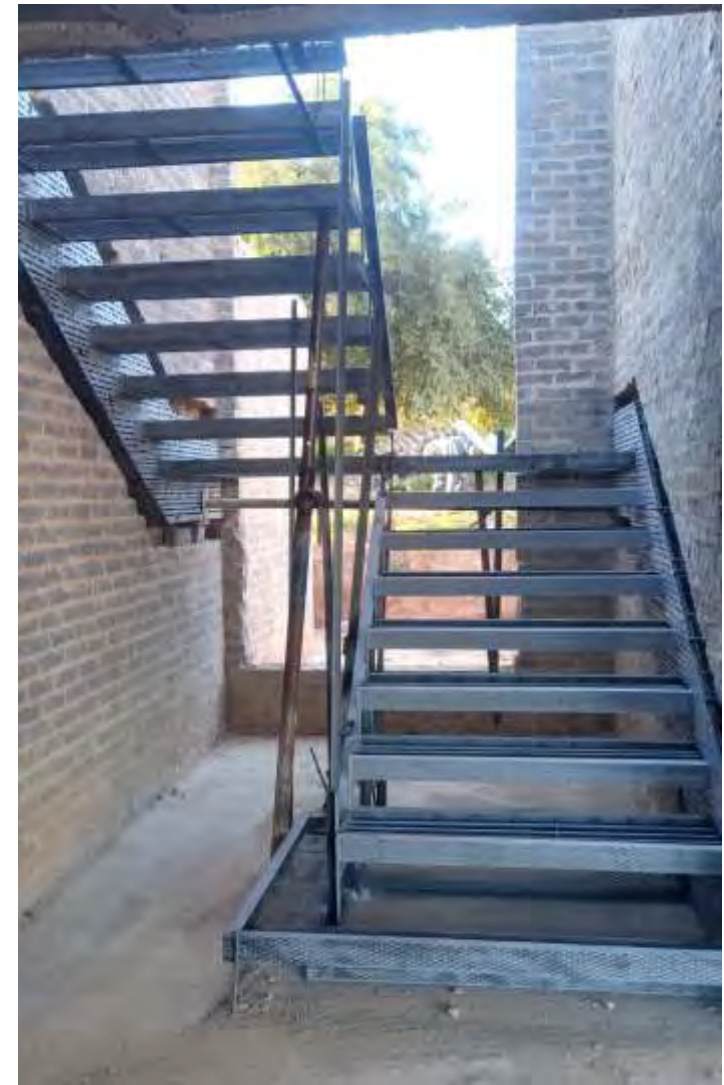


OPEN TREAD/ CANTILEVER STAIRCASE

An Open tread/ Cantilever staircase is a contemporary design characterized by steps that seemingly float in mid-air without visible support and has the option of either having a side beam or a centre beam. It creates a minimalist and open feel, enhancing light flow and emphasizing the clean lines and simplicity of the architectural space.



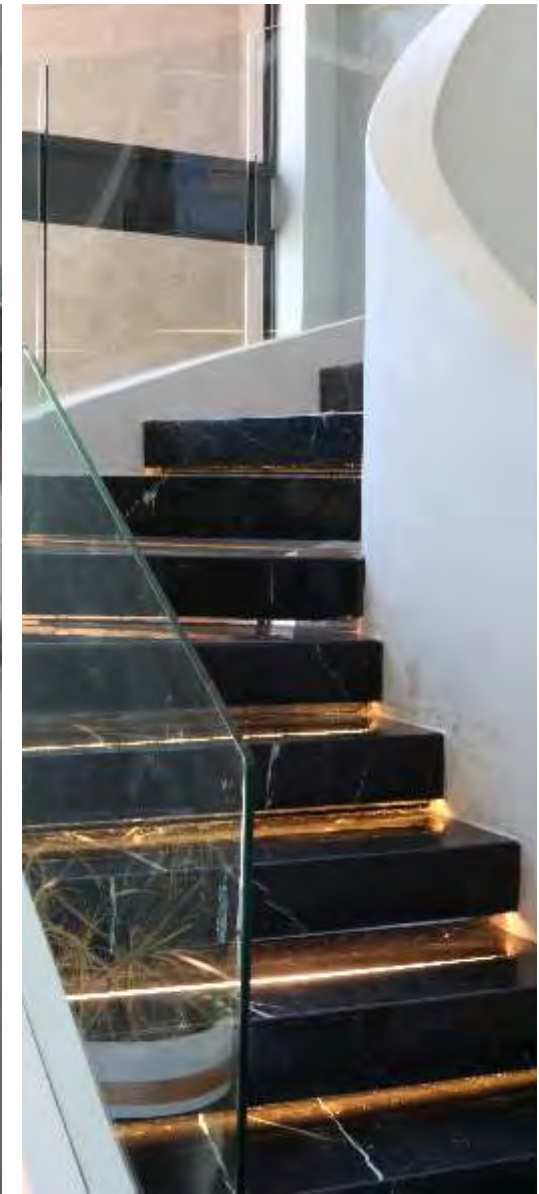
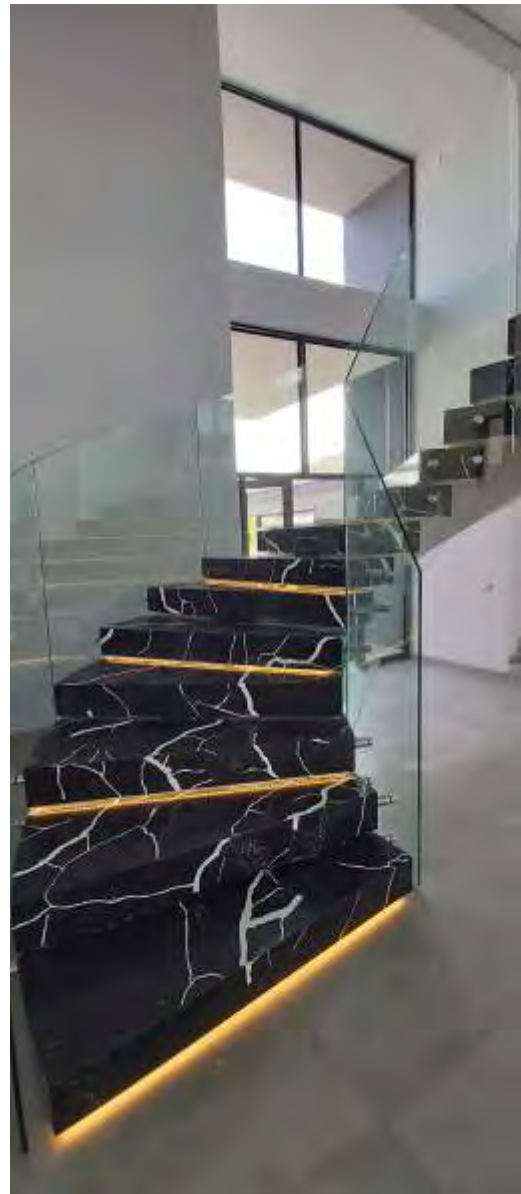
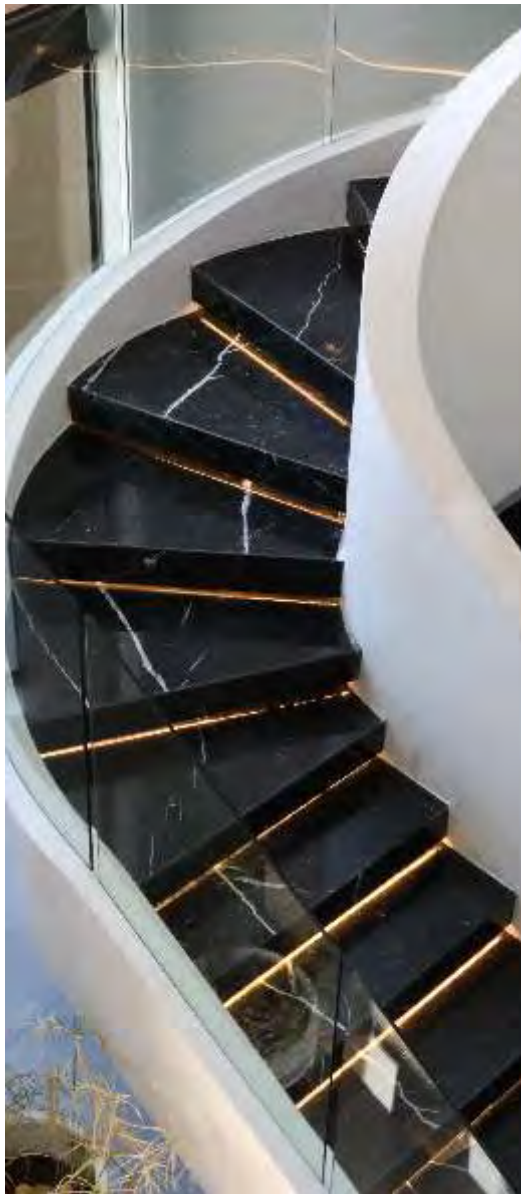




CANTILEVER STAIRCASE

A cantilever is a beam anchored at only one end. Cantilevered Stairs have independent steps which are anchored to a bearing wall or a stringer beam embedded in a wall, with the help of steel bolts or pins. The idea is to give the impression of floating stairs. Master Stairs's cantilevered staircases can be manufactured in various materials, shapes and finishes





CURVED STAIRCASE

A curved staircase gracefully arcs and follows a curved path, offering a visually striking and grand impression. It adds an elegant touch to any space, accentuating the architectural beauty and providing a smooth and flowing transition between different levels.



STEEL AND WOOD STAIRCASE

A steel and wood staircase combines the durability and sleekness of steel with the warmth and natural beauty of wood. The steel framework provides structural support and a modern aesthetic, while the wooden steps add a touch of organic charm and comfort to the overall design. This combination creates a harmonious blend of materials, resulting in a stylish and versatile staircase option.



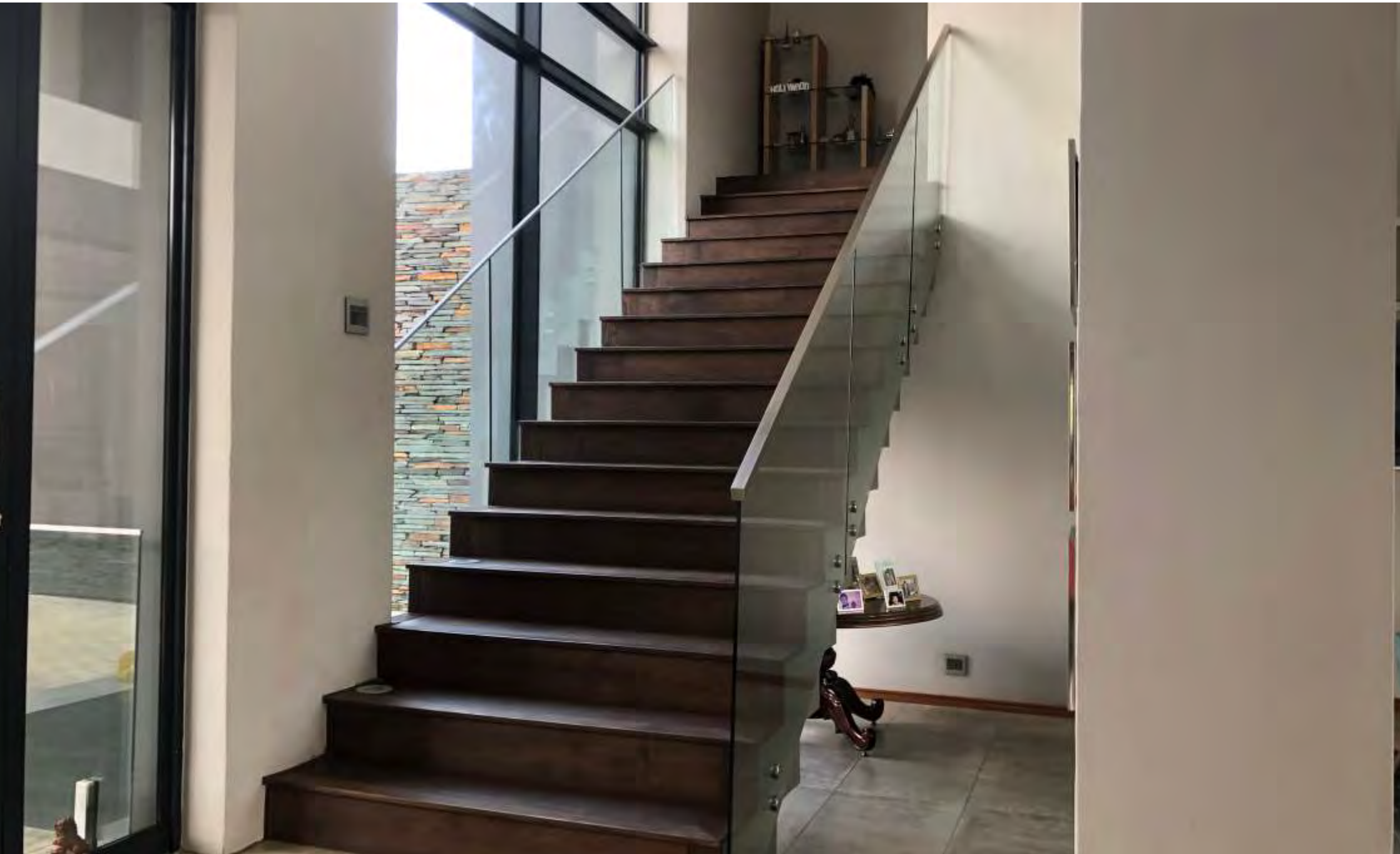




PROFILED STAIRCASE

A straight profiled staircase is a design where the steps have a distinct profile or shape while maintaining a straight trajectory. The steps can feature various geometric patterns or contours, such as curved or angled edges, giving the staircase a unique and visually appealing appearance while maintaining a linear structure. This combination of straightness and profiled design adds an element of architectural sophistication to the staircase.





CONVENTIONAL STAIRCASE

A simple and cheap straight conventional staircase design typically consists of a basic structure with straight risers and treads. It is often made of affordable materials, without intricate detailing or embellishments. While it may lack elaborate aesthetics, it provides a functional and cost-effective solution for vertical circulation in a straightforward manner.







STEEL SPIRAL STAIRCASE

A beautiful steel spiral staircase with a center pole showcases a stunning combination of elegance and structural integrity. The central pole provides stability while the sleek steel framework gracefully spirals upward. The metal steps, with their sleek design and polished finish, exude modern sophistication, creating a striking focal point in any space. The overall aesthetic is one of contemporary allure, blending the durability and sleekness of steel with the captivating spiral form.



STEEL SCREENS

Beautiful custom-designed steel art screens are exquisite creations that combine the versatility of steel with artistic expression. Intricate and unique patterns, shapes, or motifs are meticulously crafted into the steel, resulting in visually stunning pieces that can serve as decorative partitions, room dividers, or standalone artworks. The screens' interplay of light and shadow, along with the intricate details and craftsmanship, evoke a sense of elegance, sophistication, and creativity, adding a captivating touch to any interior or exterior space.





PERGOLA

Custom-designed pergolas are tailor-made outdoor structures that provide shade, architectural beauty, and a gathering space in gardens, patios, or other outdoor areas. It can feature intricate lattice work, decorative accents, and personalized elements. These pergolas are designed to blend seamlessly with the surrounding landscape while reflecting the unique style and preferences of the owner. With their open-roofed design, they allow for the gentle filtering of sunlight and offer a cozy retreat for relaxation, entertaining, or enjoying the outdoors in comfort and style.







STEEL ART

A beautiful simple steel art design embodies elegance and minimalism, showcasing the inherent beauty of the material itself. With clean lines and precise craftsmanship, it creates a captivating visual impact. The simplicity of the design allows the steel to shine, whether it's a sculptural piece, wall art, or a functional object, making a striking statement while maintaining a sense of understated sophistication.







STEEL GATES

Beautiful steel gate designs combine strength, durability, and aesthetic appeal. They can feature intricate scrollwork, ornate patterns, geometric shapes, or even nature-inspired motifs. The steel is often adorned with decorative elements, such as finials or embellishments, that add a touch of elegance. Whether it's a grand entrance gate or a smaller garden gate, the craftsmanship and attention to detail make these designs stand out. The interplay of metalwork and negative space creates an eye-catching visual effect, enhancing the overall allure and providing a stunning first impression for any property.







About Us

Master Stairs supplies construction products to the domestic, residential and construction market. Custom designed to be the perfect fit for your living space. Our staircases are not just perfectly engineered to be a functional asset to your home or building but they enhance the area around them. We manufacture permanent steel shuttering made to specification. The lintels are manufactured to ISO 9002 and have been accepted by the National Home Builders Registration Council (NHBC). The products should be used in accordance with good building practice and the National Building Regulations. Please note that stairway shuttering, steel arches, steel lintels and shuttering for balconies are registered and are of the high guaranteed quality. At Master Stairs all of your construction needs are catered to. Our ranges of steel arches, stairway shuttering, steel lintels and shuttering for balconies have been tested which ensures that you get the absolute best quality products each and every time. The products have been structurally analyzed and the structural integrity verified by independent structural engineers.

Product Info

Our premier staircase collection, where elegance meets durability. At Masterstairs, we pride ourselves on crafting exquisite staircases that elevate your space. Meticulously designed and expertly constructed, our staircases are built to withstand the test of time. We spare no expense when it comes to materials, utilizing only the finest quality steel to ensure unparalleled strength and stability. With our state-of-the-art CNC cutting machines, precision is guaranteed in every detail, resulting in flawless craftsmanship. Transform your home or commercial space with our stunning staircases, combining timeless aesthetics and cutting-edge technology.

Experience the epitome of excellence with Masterstairs.

A large, light teal graphic of a staircase, similar to the logo, is positioned in the background on the right side of the page, extending from the middle to the bottom.

Engineering Council of South Africa



This is to certify that

Jonathan Dawid Du Preez

is registered as

Professional Engineering Technologist

In terms of the Engineering Profession of South Africa Act 2000
(Act No. 46 of 2000)

Date **2018-11-19**

Registration Number

2018300316

President

Chief Executive Officer



ECSA-00034126



ECSA CERTIFICATE

Our engineer specializes in his work with unparalleled expertise and dedication. With years of experience and a deep understanding of his field, he possesses a profound knowledge of the latest technologies, methodologies, and industry standards.

His meticulous attention to detail ensures precision in every project he undertakes. He consistently stays updated with emerging trends, allowing him to deliver innovative solutions and surpass client expectations. His commitment to continuous learning and a passion for excellence makes him a trusted professional, capable of tackling complex challenges with confidence and delivering exceptional results.



MASTER STAIRS

TEAM *Vitro Frameless Glass*



VITRO
Frameless Glass



010 006 5590



sales@vitroframeless.co.za



www.vitroframeless.co.za



Unit 5, 41 Bosbok Road, Highbury,
Meyerton, 1961



@VitroFrameless



@vitroframeless



060 618 5401 | 082 339 3746



sales@masterstairs.co.za



www.masterstairs.co.za



Unit 16, 15 Top Rd, Anderbolt,
Boksburg, 1459



@MasterStairs



@masterstairs

CAPE TOWN BRANCH - COMING SOON

PROUDLY DESIGNED AND PRINTED BY
060 964 0209 | info@print-id.co.za | www.print-id.co.za

